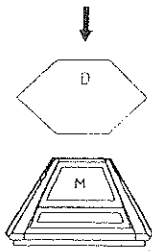
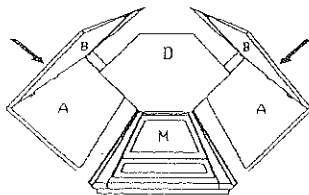


DIAGONAL CORNER SINK BASE CABINET ASSEMBLY INSTRUCTIONS

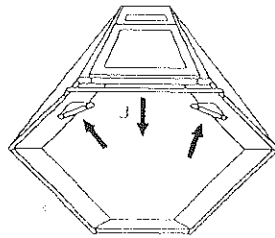
Step 1 1.1, 2



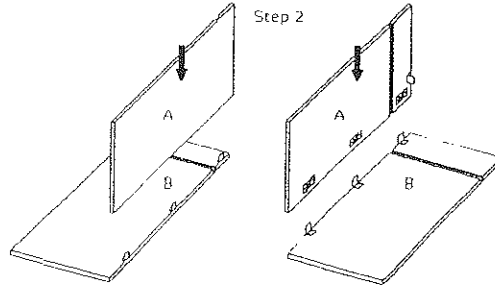
Step 3



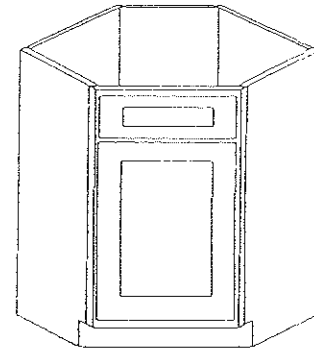
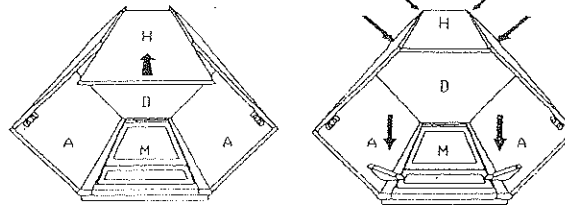
Step 5



Step 2



Step 4



Step 1 -

1. Lay the Front Face (M) on a soft working surface with grooves facing upward. The grooves will be for the Top/Bottom panel (D).

2. Insert a Top/Bottom Panel (d) into the grooves on the Front Face (M) making sure clips are lined up and fully engaged. Insert lock screw into clip pair and tighten all screws. Repeat these steps for the other Top/Bottom Panel (d).

Step 2 -

1. Lay the Back side panel (B) on a soft working surface with grooves facing upward. The grooves will be for the side panels (A).

2. Insert a Side Panel (A) into the grooves on the Back Side Panel (B) making sure clips are lined up and fully engaged. Insert locking screw into clip pair and tighten all screws. Repeat this steps for the other Side Panel (A).

Step 3 -

1. Insert the assembled side panel (A) and Back Side Panel (B) into the grooves on the Top/Bottom Panel (D) making sure clips are lined up and fully engaged. Insert lock screw into clip pair and tighten all screws. Repeat these steps for the other assembled Side Panel (A) and Back side Panel (B).

Step 4 -

1. Insert the Back Panel (H) against Right/Left Back Panels (B) as shown

2. From the back of the cabinet, screw the back Back Side Panels (B) into the Back Panel (H), using the long phillips screws.

Step 5 -

1. Insert the Toe Kick (J) into groove on the Side Panels (A) at desired height

PARTS LIST:

	ITEM	QTY
A	RIGHT/LEFT SIDE PANEL	2
B	RIGHT/LEFT BACK SIDE PANEL	2
D	TOP/BOTTOM PANEL	2
H	BACK PANEL	1
M	FRONT FACE	1
J	TOE KICK	1

PEAK Home Products
www.peakhomeproducts.com